



# GMT MONTHLY MEMBERSHIP PROGRESS REPORT

Results as of: 8/31/2019

Multiple District 3234

LOCATION: INDIA

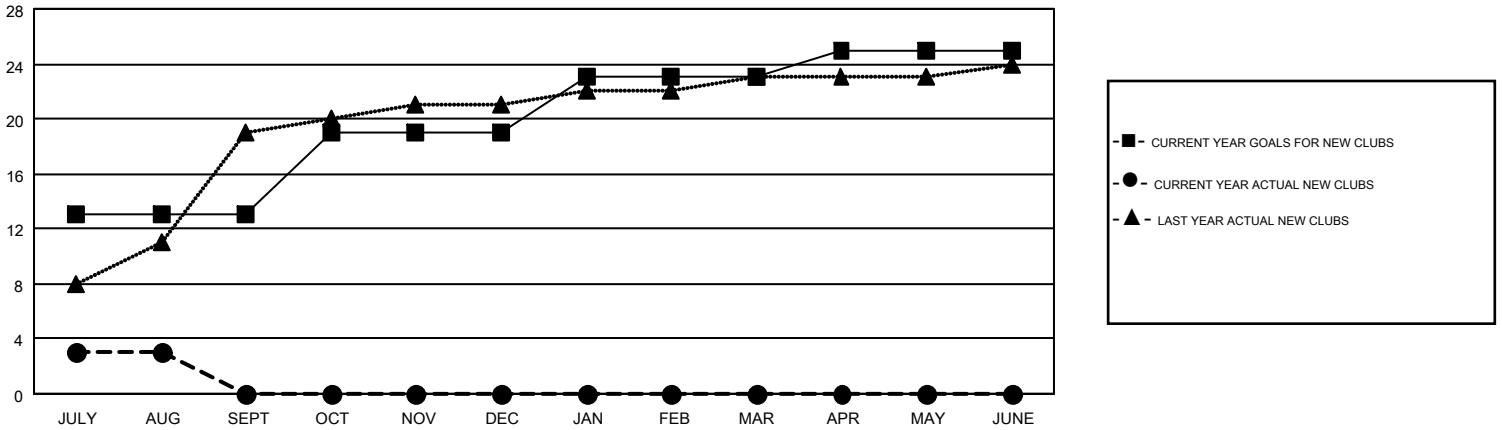
GMT: OPEN

GMT CA 6

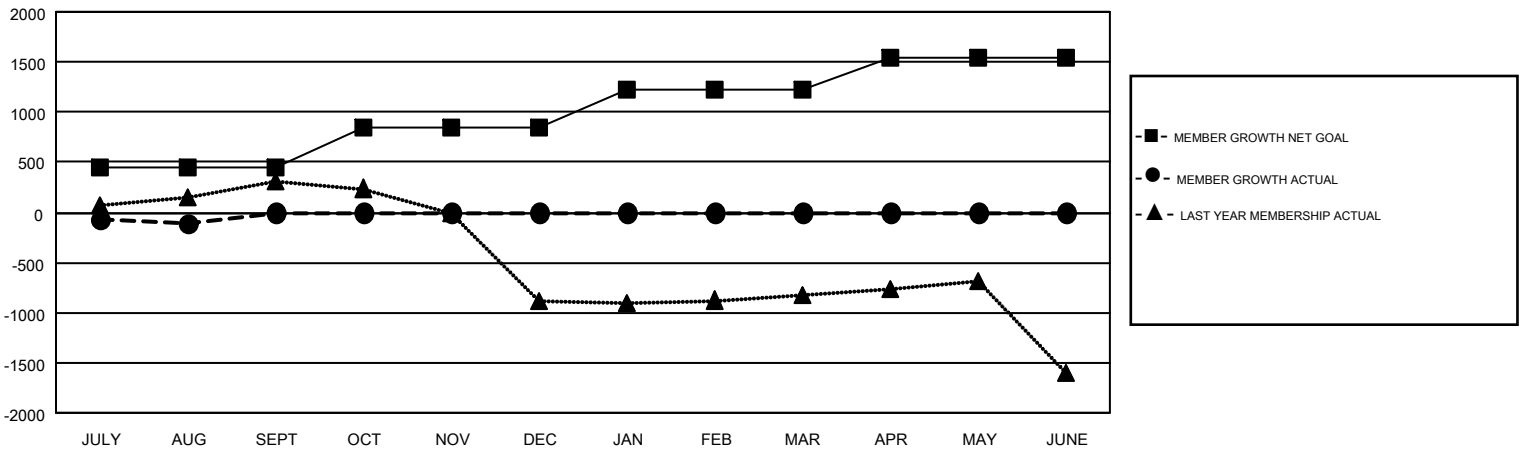
| Clubs                 |               |           |               |
|-----------------------|---------------|-----------|---------------|
| RESULTS FOR 2019-2020 |               |           |               |
| QUARTER               | NEW CLUB GOAL | NEW CLUBS | DROPPED CLUBS |
| JULY/AUG/SEPT         | 13            | 3         | 0             |
| OCT/NOV/DEC           | 6             | 0         | 0             |
| JAN/FEB/MAR           | 4             | 0         | 0             |
| APR/MAY/JUNE          | 2             | 0         | 0             |

| Members               |                        |                      |  |
|-----------------------|------------------------|----------------------|--|
| RESULTS FOR 2019-2020 |                        |                      |  |
| QUARTER               | MEMBER GROWTH NET GOAL | MEMBER GROWTH ACTUAL | DROPPED MEMBERS ACTUAL (including transfers) |
| JULY/AUG/SEPT         | 450                    | 287                  | 342  |
| OCT/NOV/DEC           | 400                    | 0                    | 0  |
| JAN/FEB/MAR           | 380                    | 0                    | 0  |
| APR/MAY/JUNE          | 320                    | 0                    | 0  |

GOALS AND ACTUAL NEW CLUBS CUMULATIVE



GOALS AND ACTUAL MEMBERS CUMULATIVE



|                  |   |                                       |                 |
|------------------|---|---------------------------------------|-----------------|
| DROPPED CLUBS: 0 | 59 CLUBS OF 365 ADDED 1 OR MORE NEW MEMBERS | <u>GENDER DISTRIBUTION</u>            |                 |
| DROPPED MEMBERS  |   | MALE                                  | 10,647 (65.61%) |
| DECEASED         | 4   | FEMALE                                | 5,580 (34.39%)  |
| CLUB CANCELLED   | 0   | TOTAL FAMILY UNIT MEMBERS 9,734       |                 |
| OTHER            | 338   | FAMILY MEMBERS PAYING HALF DUES 5,488 |                 |
| TOTAL            | 342   |                                       |                 |

[CLICK HERE FOR CUMULATIVE MEMBERSHIP DATA](#)